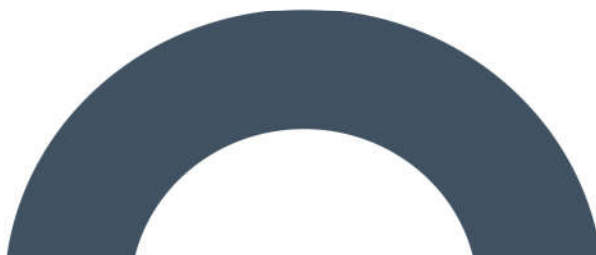
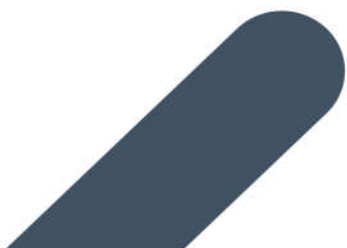


RECEIVED: 03/01/2025

## **Appendix 14-1 Photographic Record**

Briskalagh Renewable  
Energy Development, Co.  
Kilkenny



RECEIVED: 03/01/2025

14.1

## Proposed Wind Farm

RECEIVED: 03/01/2025



*Plate 1: General view of location of T01 and associated hardstand, looking SW.*



*Plate 2: General view of location of T02 and associated hardstand, looking E.*

RECEIVED: 03/01/2025



Plate 3: T03 and associated hardstand, looking NW.

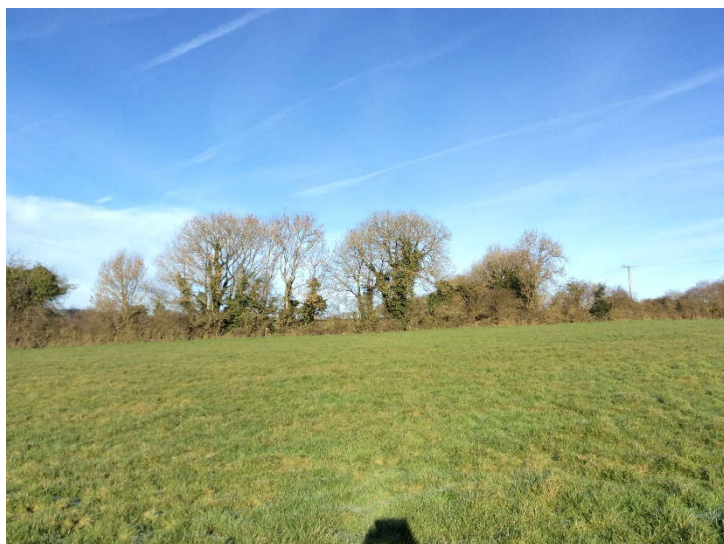


Plate 4: Proposed new road to T03, looking NW.



Plate 5: Proposed new road between T03 and T04, looking WNW.



RECEIVED: 03/01/2025



*Plate 6: Proposed new road between T03 and T04 further to east, looking WNW.*



*Plate 7: T04 and associated hardstand, looking E.*



*Plate 8: Location of T05 and associated hardstand, looking SE.*

RECEIVED: 03/01/2025



Plate 9: T06 and associated hardstand, looking SE.



Plate 10: Forestry within which T07 and associated hardstand are located, looking NW.

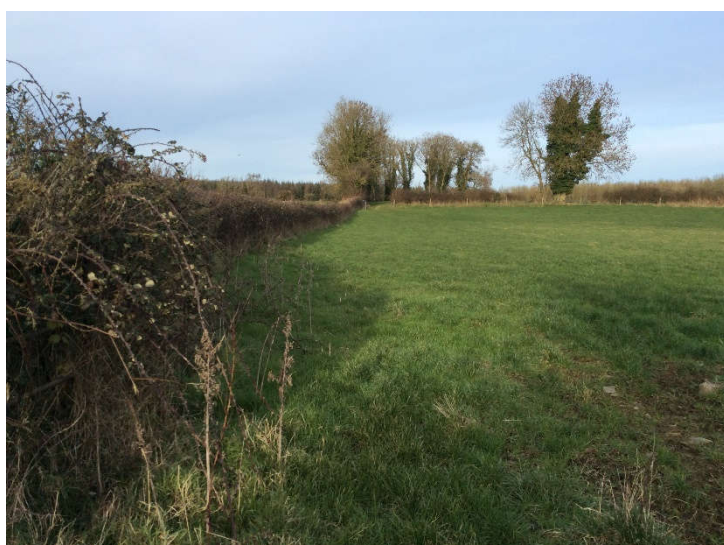


Plate 11: Proposed temporary construction compound south of T07, looking NNE.



RECEIVED: 03/01/2025



Plate 12: Existing road due for upgrade to SE of proposed onsite substation, looking NW.



Plate 13: Proposed onsite substation location, looking NW.



Plate 14: Proposed temporary construction compound to NE of proposed onsite substation, looking N.

## 14.2 Proposed Grid Connection

RECEIVED: 03/01/2025



Plate 15: Proposed Grid connection route at Tullaroan, looking NNW.



Plate 16: Proposed route further to the NW, looking NW.



RECEIVED: 03/01/2025



Plate 17: Proposed route further to the north in Brittas townland, looking NNE.



Plate 18: Proposed route at southern entrance to Freshford, looking N.



Plate 19: Proposed route further to NE in Sweethill td., looking NE.

RECEIVED: 03/01/2025



Plate 20: Grange Bridge (NIAH Reg. 12400902) on proposed Grid Connection route, looking SW.



Plate 21: Proposed Grid Connection Route at Parksgrove td., with NIAH Reg. 12303001 on right of photo, looking S.



Plate 22: NIAH Reg. 12303002 Ballyragget National School to west of proposed Grid Connection Route at Parksgrove td., looking W.



RECEIVED: 03/01/2025



Plate 23: Proposed Grid Connection Route on N77, looking NW.



Plate 24: Proposed Grid Connection Route through pasture in Moatpark td., looking N.



Plate 25: Proposed route further to NE, looking SW.



RECEIVED: 03/01/2025



Plate 26: Proposed route further to NE, looking SW.



Plate 27: Proposed route further to NE along existing track, looking SW.



Plate 28: Proposed route along R432 adjacent to St Finnan's Cemetery, looking NW.



Plate 29: Existing Ballyragget substation, looking W.

RECEIVED: 03/01/2025